

# SAAB Radio Codes Throughout the Years

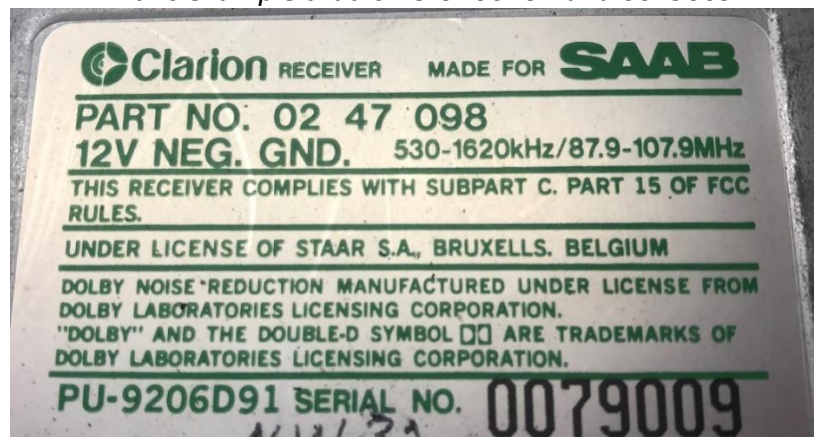
Fees may apply when retrieved at a Service Center.

## SAAB USA Radio Codes from Model Years 1986-2009

Beginning in 1986 SAAB used numerical radio codes to prevent theft. A business size card with the radio code was provided to each owner at delivery. As time passes owners may have lost this code/card. Below is a summary of each vehicle with a code and how to enter it in the radio. The 1999 model year and later vehicles do not have a code that can be input by an owner. They require programming with a Tech2 at an [OSC](#).

Radio Codes can be provided by your local [OSC](#). The radio needs to be removed from the vehicle to record the Model/PU and SERIAL numbers (*fee may apply from the Service Center*). That data is entered in a radio code look up database to retrieve the code. Once the code has been captured, write it down in a safe place.

*Example of 1991 900 radio sticker with PU and Serial numbers needed for OSC to retrieve code.  
In this example that is PU-9206D91 and 0079009*



## 1986-1987 900

The early Saab 900 Clarion Audio System incorporates a six-digit code. The code is programmed during manufacture and cannot be changed. It is therefore important to keep the code in a safe place, never together with the audio system.

If the battery is disconnected, if the audio system is removed or if its power supply is cut off for some other reason, the six-digit code must be entered using the station pre-set buttons as follows.

1. Turn on ignition
2. Turn on Radio
3. Hold down the DNR button
4. Enter the six-digit code on the station pre-set buttons. If the correct code is entered, the radio will begin to play.

If a wrong number was used while entering your code, simply release the DNR button, depress the DNR button again and enter the correct code.

## 1988-1993 900 and 1994 Convertible

The Saab 900 Clarion Audio System incorporates a four-digit code. The code is programmed during manufacture and cannot be changed. It is therefore important to keep the code in a safe place, never together with the audio system.

If the battery is disconnected, if the audio system is removed or if its power supply is cut off for some other reason, the four-digit code must be entered using the station pre-set buttons as follows.

1. Turn on ignition
2. Turn on Radio
3. Enter the four-digit code on the station pre-set buttons. If the correct code is entered, the radio will begin to play.

If a wrong number was used while entering your code finish entering all four digits. Then press and hold the "BAND" button until the word "CODE" appears then enter the correct code.

**NOTE:** If the wrong code is entered three times in succession you will have to wait one hour with the vehicle and the radio switched **ON** before you can enter the code again. After one hour, press and hold the BAND switch until "CODE" appears on the display. The correct code must be entered the first time or you will have to wait another hour with the radio and vehicle switched on before you can try again.

A battery charger or tender should be used to keep the battery from going dead. **Do not leave your car unattended.**

## 1986-1987 9000

The early Saab Clarion 9000 Audio System incorporates a six-digit code. The code is programmed during manufacture and cannot be changed. It is therefore important to keep the code in a safe place, never together with the audio system.

If the battery is disconnected, if the audio system is removed or if its power supply is cut off for some other reason, the six-digit code must be entered using the station pre-set buttons as follows.

1. Turn on ignition
2. Turn on Radio
3. Hold down the DNR button
4. Enter the six-digit code on the station pre-set buttons. If the correct code is entered, the radio will begin to play.

If a wrong number was used while entering your code, simply release the DNR button, depress the DNR button again and enter the correct code.

## 1988-1998 9000

The Saab Audio System incorporates a four-digit code. The four-digit code is programmed during manufacture and cannot be changed. It is therefore important to keep the code in a safe place, never together with the audio system.

## SAAB USA Radio Codes from Model Years 1986-2009 cont.

If the battery is disconnected, if the audio system is removed or if its power supply is cut off for some other reason, the four-digit code must be entered using the station pre-set buttons as follows.

1. Turn on ignition
2. Turn on Radio
3. Enter the four-digit code on the station pre-set buttons. If the correct code is entered, the radio will begin to play.

If a wrong number was used while entering your code finish entering all four digits. Then press and hold the "BAND" button until the word "CODE or CODE IN" appears then enter the correct code.

**NOTE:** If the wrong code is entered three times in succession you will have to wait one hour with the vehicle and the radio switched **ON** before you can enter the code again. After one hour, press and hold the BAND switch until "CODE" appears on the display. The correct code must be entered the first time or you will have to wait another hour with the radio and vehicle switched on before you can try again.

A battery charger or tender should be used to keep the battery from going dead. **Do not leave your car unattended.**

## 1994-1998 900

This Saab Audio System incorporates a four-digit code. The four-digit code is programmed during manufacture and cannot be changed. It is therefore important to keep the code in a safe place, never together with the audio system.

If the battery is disconnected for more than 3 minutes, if the audio system is removed or if its power supply is cut off for some other reason, the four-digit code must be entered using the station pre-set buttons as follows:

1. Turn on ignition
2. Switch on the radio, the display shows ("CODE IN").
3. Enter the four-digit code on the station pre-set buttons. If the correct code is entered, the radio will begin to play.

If a wrong number was used while entering your code finish entering all four digits. Then press and hold the "BAND" button until the word "CODE or CODE IN" appears then enter the correct code.

**NOTE:** If the wrong code is entered three times in succession you will have to wait one hour with the vehicle and the radio switched **ON** before you can enter the code again. After one hour, press and hold the BAND switch until "CODE" appears on the display. The correct code must be entered the first time or you will have to wait another hour with the radio and vehicle switched on before you can try again.

A battery charger or tender should be used to keep the battery from going dead. **Do not leave your car unattended.**

## SAAB USA Radio Codes from Model Years 1986-2009 cont.

### 1999-2005 9-5 and 1999-2002 9-3 incl 2003 9-3 Convertible

When "Radio Code" or "Radio LOCKED" is shown on the SID display the radio will need to be **(Married)** by a Saab Service Center with a Tech2. No owner/user input will program the radio code. The code is now an internal electronic hand shake between modules. This is usually caused by the battery being disconnected or replaced. Please contact your local [OSC](#).

This occurs because the audio system checks the validity of the theft protection information (if they are "married") at regular intervals. This can sometimes occur when the battery has been disconnected. If the information is not correct a message will be displayed necessitating the radio be electronically re-**Married** to the vehicle with a Tech2. Please contact your local [OSC](#).

### 2006-2009 9-5

When "TheftLock, Radio Code, Radio LOCKED or No VIN", is shown on the SID display the radio will need to be **(Married)** by a Saab Service Center with a Tech2. No owner/user input will program the radio code. The code is now an internal electronic hand shake between modules. This is usually caused by the battery being disconnected or replaced. Please contact your local [OSC](#).

A technician may comment that they cannot get the radio to Marry/ADD. They may also state the radio displays "NO VIN" after adding. The "NO VIN" displayed indicates the radio is **DIVORCED** from the vehicle.

Program SID, during this procedure the Tech2 prompts to enter the VIN. At this point, SDAR (XM receiver) will show **Married**. The Radio will now be **Married** to the vehicle. SID and the SDAR (XM receiver) must be **Married** prior to attempting to **Marry** the Radio to the vehicle.

NOTE: Once the radio is **Married** to the vehicle it may be necessary to carry out spare parts programming of the radio and or SID using Tech 2.