

Title: Ignition Switch Module (ISM) 32021815 Kit Formerly 12801010 Instructions
Vehicles: 2003-2011 9-3 9440

Condition/Concern:

The ignition switch module (ISM) 12801010 is now kit 32021815. Follow the instructions below to install the kit. We must reuse the internal sliding mechanism (black housing) if that portion is not salvageable another switch should be used for this rebuild.



Kit Contents:

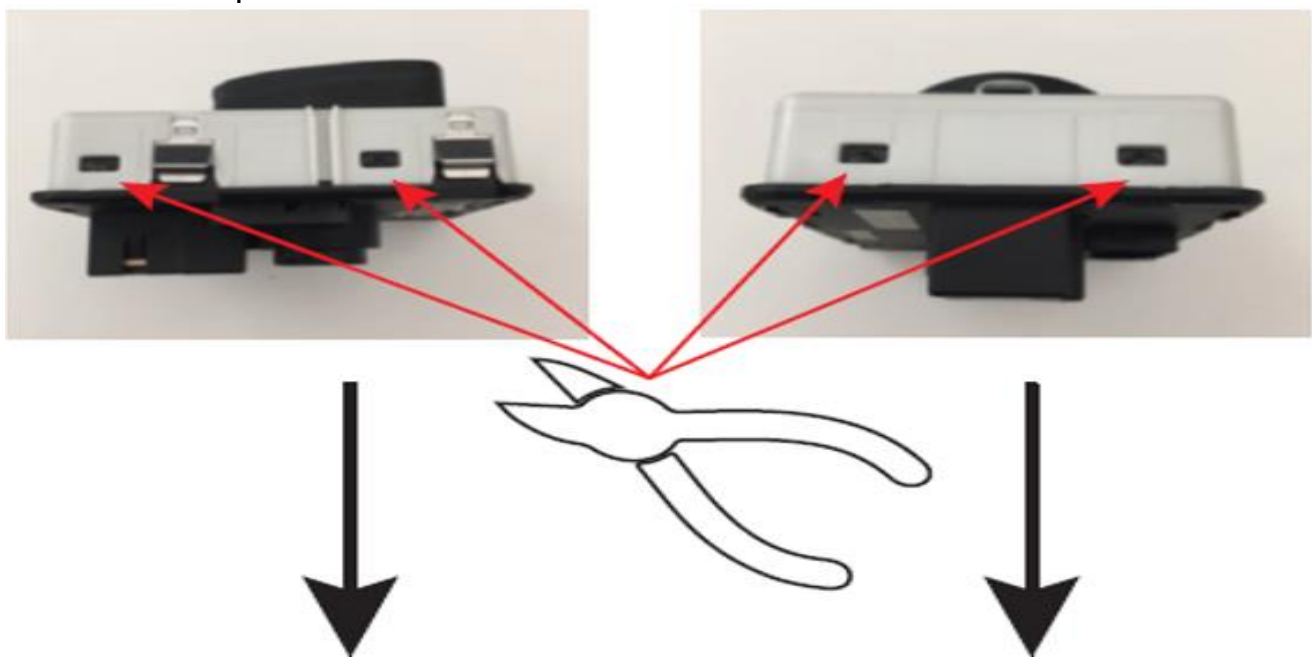
- 1- Circuit Board
- 1- Key guide
- 1- Lock Housing
- 1- Spring
- 1- Plunger
- 4- Steel Retaining Clips

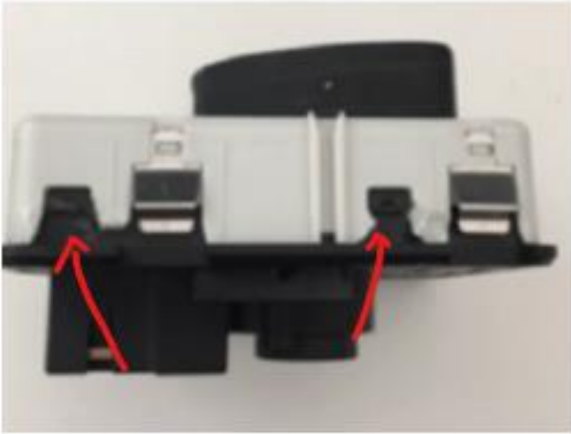
Recommendation/Instructions:

Begin by carefully disassembling the old switch. We will reuse the internal sliding mechanism, if that portion is not salvageable another switch should be used. The white upper housing must be carefully separated from the black lower portion. Two methods of splitting the housing are shown below.

Method #1

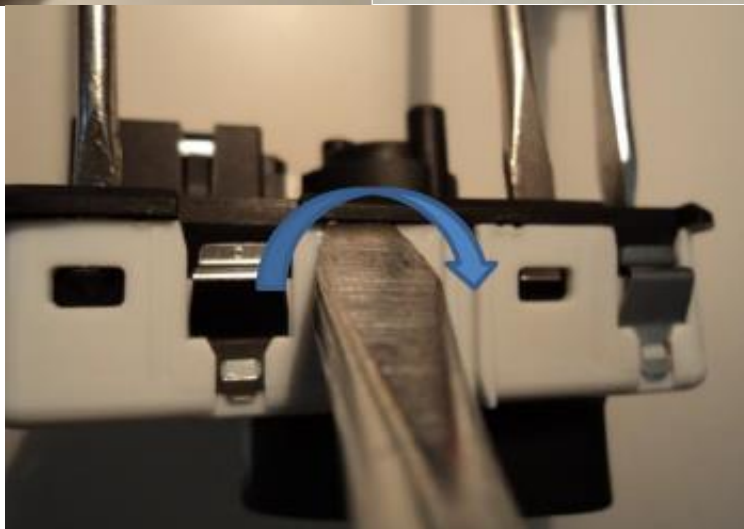
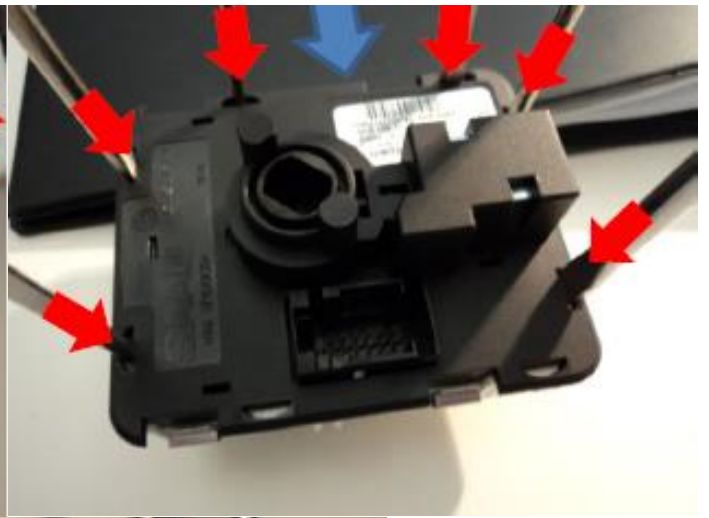
The ISM has 2 locking tabs on each of its' 4 sides. Using a small pair of wire cutters, cut/trim the white housing as shown below at the locking tabs. Be careful not to damage the black housing, we must reuse that portion.





Method #2

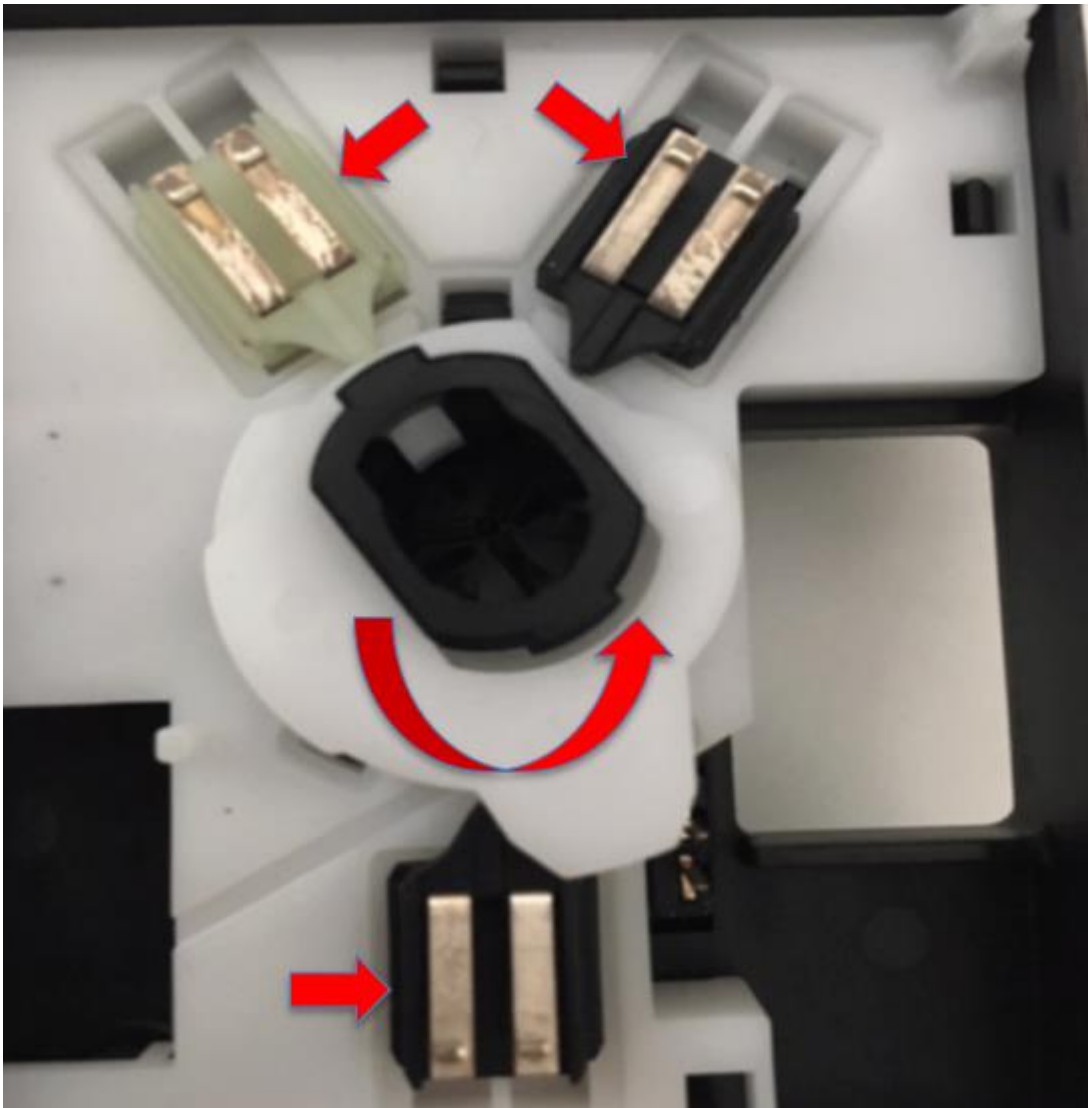
Insert several small screwdriver tips into the release slots on 3 sides of the ISM. Then pry open with a flat tip screwdriver.



Once the housings are separated remove the old circuit board.
Set aside the circuit board, white upper housing, plunger, and spring, they will not be re-used.

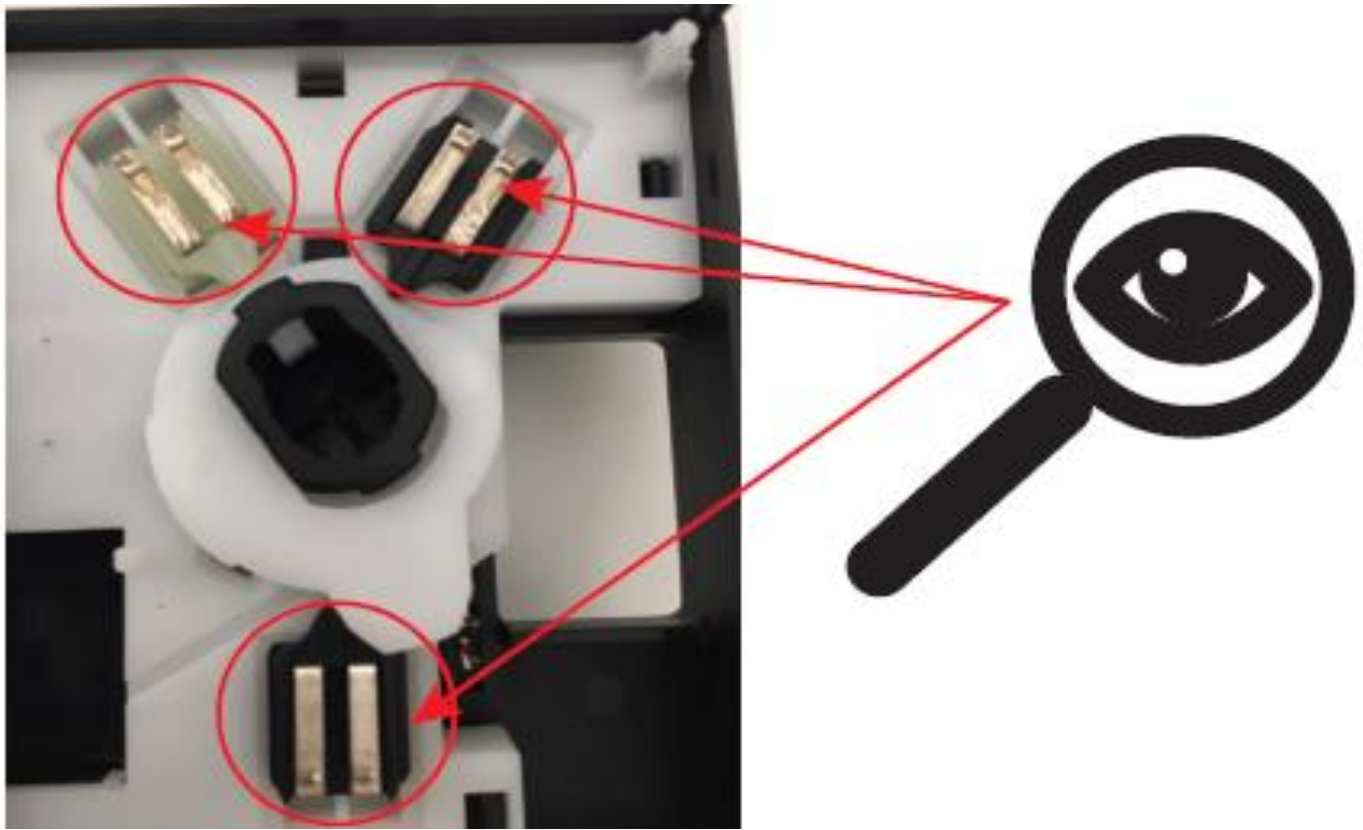


Make sure the rotating/sliding portions of the black housing moves freely before proceeding with the repair. This section must be clean, dry, and free of dirt/debris. If it is not possible to clean this section another switch should be used.



NOTE: It may help to lightly pull up on the metal contacts to give them more tension

Inspect the electrical contacts of the black sliding housing we will reuse. Circled areas identify contact areas that is to be inspected and cleaned. Utilize a Nylon, Plastic Bristle Brush or pencil eraser to clean the switch contacts. Wipe away any cleaning residue with a very light spray of contact cleaner on a small lint free cloth.



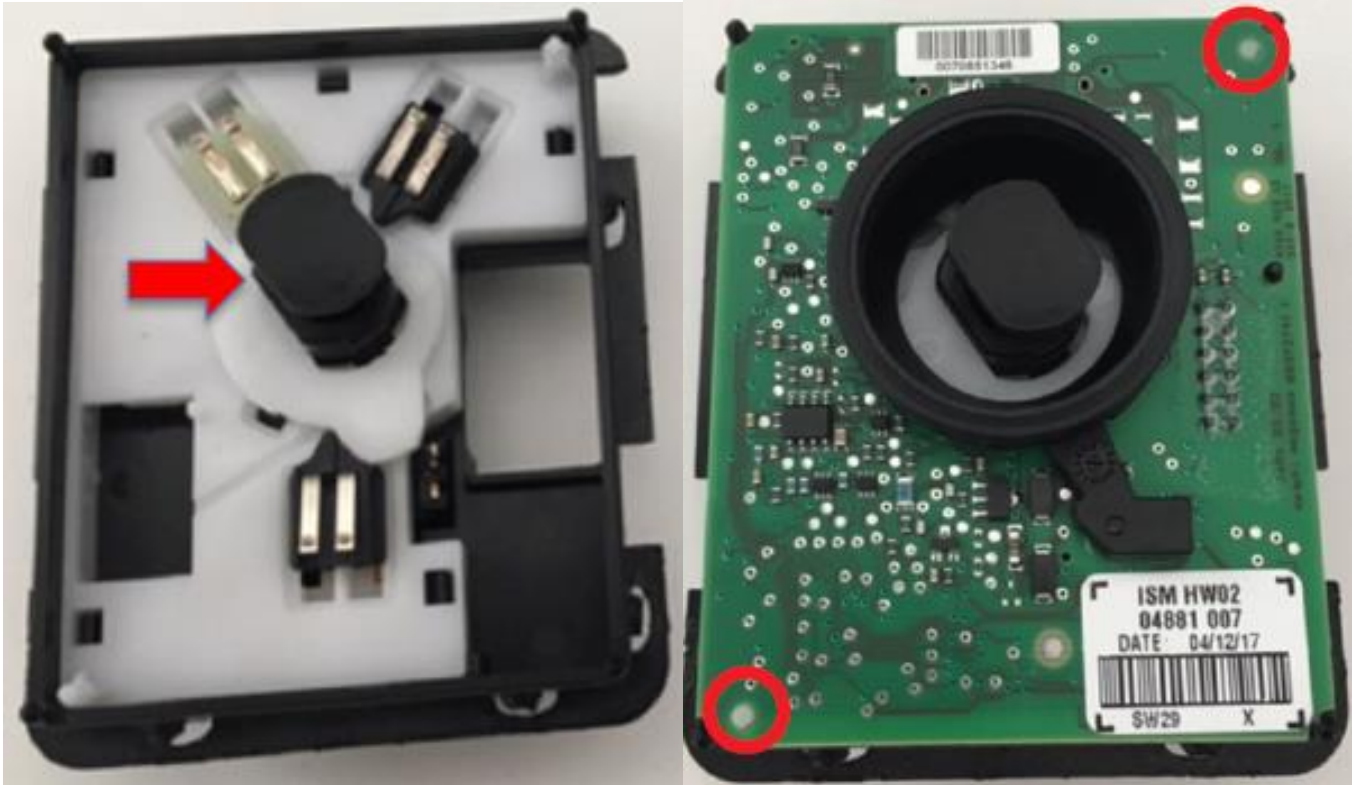
Very Important Note: Inspect the new key guide before assembly shown below . Make sure the metal key retainer is fully locked into its tab as shown on the right. If the key retainer is not in the proper position, it may allow the key to pop out when assembled. Slide the retainer up to lock into place with the tab.



Once the sliding mechanism is cleaned, confirmed to move freely and the steel retaining tabs is in place, we will begin to install the sub-components.

Install the small spring first, then the plunger into the center of the switch housing. Make sure the plunger is properly indexed in the hole. It can be installed 180 degrees out of alignment.

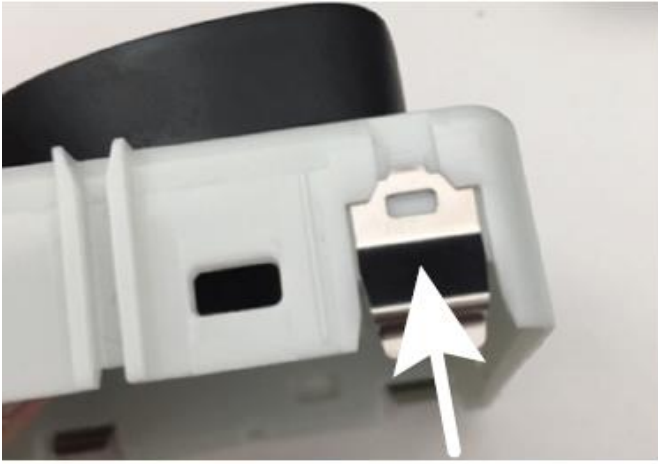
Install the circuit board with the connector side down. Make sure to align the pins to the holes in the circled areas.



Insert the key guide into the housing. Align the key guide as shown to LOCK and snap it into place by placing the housing on a flat surface and pressing down with your hand. There are 2 tabs on the bottom of the key guide that must fit into the slots of the housing. If the tabs are not located in the housing properly the key guide will not set flush or turn from LOCK to ST. The key guide must turn freely.



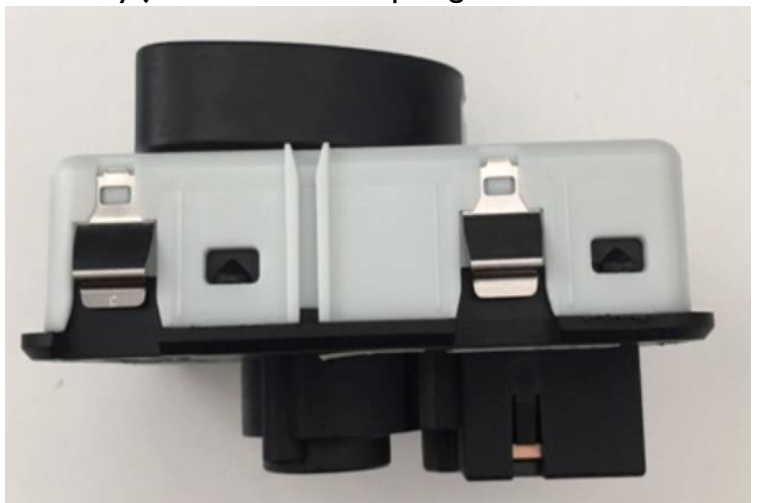
Turn the housing over and install the 4 mounting clips.



Align the circuit board plunger and key guide as shown below to the LOCK position.



Check the alignment of the housings is correct, slowly join them and snap together.



Install into vehicle.