

SAAB 9-3 VIN INFORMATION

Position
VIN

1	2	3	4	5	6	7	8	9	10	11	12
Y	S	3	F	D	4	5	S	X	9	1	016584

- 1 Geographical region** Y = Northern Europe
- 2 Country** S = Sweden
- 3 Vehicle manufacturer** 3 = Saab Automobile AB
- 4 Product line** F = 9-3
- 5 Model series** B = Saab 9-3 Linear
D = Saab 9-3 Arc
F = Saab 9-3 Vector
H = Saab 9-3 Aero
- 6 Body version** 4 = 4-door
5 = 5-door
7 = Convertible
- 7 Gearbox** 1 = 6-speed automatic
5 = 5-speed manual
6 = 6-speed manual
9 = 5-speed automatic
- 8 Engine variant** B = 1.8i
F = 1.8t
S = 2.0t
Y = 2.0 Turbo
U = 2.8 t, 6-cyl
V = 1.9 Diesel, 8-valve
W = 1.9 Diesel, 16-valve
- 9 Check digit** 0-9 or X
- 10 Model year** 6=2006
- 11 Place of manufacture** 1 = Trollhättan

6 = Graz
- 12 Production number** 000001-999999

SAAB 9-5 VIN INFORMATION

Position
VIN

1	2	3	4	5	6	7	8	9	10	11	12
Y	S	3	E	D	4	9	G	X	9	3	502830

- 1 Geographical region

Y = Northern Europe
- 2 Country

S = Sweden
- 3 Vehicle manufacturer

3 = Saab Automobile AB
- 4 Product line

E= 9-5
- 5 Model series

A = Saab 9-5 Linear with driver airbag
B = Saab 9-5 Linear with driver and passenger bag
C = Saab 9-5 Arc with driver airbag
D = Saab 9-5 Arc with driver and passenger airbag
E = Saab 9-5 Vector with driver airbag
F = Saab 9-5 Vector with driver and passenger airbag
G = Saab 9-5 Aero with driver airbag
H = Saab 9-5 Aero with driver and passenger airbag
- 6 Body version

4 = 4-door
5 = 5-door
- 7 Gearbox

5 = 5-speed manual
9 = 5-speed automatic
- 8 Engine variant

A = 2.3T B235L
C = 2.0T B205E
E = 2.3T B235
G = 2.3 Turbo, B235R
W = 1.9 TiD, Z19DTH
- 9 Check digit

0-9 or X
- 10 Model year

9 = 2009
- 11 Place of manufacture

3 = Trollhättan
9 = Trollhättan, pre-series
- 12 Production number

000001-999999

1999 Vehicle Identification Number

NUMBER OF CHARACTERS: 17 Alpha-Numeric, complies with U.S. and European Regulations.

	Y	S	3	E	F	4	8	Z	6	X	3	1	2	3	4	5	6
Geographical location, manufacturer:																	
Car line:																	
Market, equipment:																	
Body type:																	
Gearbox:																	
Engine:																	
Check digit:																	
Model year:																	
Assembly plant:																	
Serial number:																	

Position		
1-3	Mfr. Code:	YS3 = Saab Automobile AB, Sweden
4	Car Line:	D = Saab 9-3 E = Saab 9-5
5	Model Series/ Restraint Type:	D = w/Dual Airbags (9-3S, 9-5) F = SE w/Dual Airbags
6	Body Type:	3 = 3-Door Hatchback (9-3) 4 = 4-Door Sedan (9-5) 5 = 5-Door Hatchback (9-3) 7 = Convertible (9-3)
7	Gearbox:	5 = 5-Speed Manual 8 = 4-Speed Automatic
8	Engine:	E = 2.3 L, Turbo (LPT) (9-5) N = 2.0 L, Turbo (9-3, Std. Output) P = 2.0L, High Output Turbo (9-3) Z = 3.0L, Turbo V6, (9-5)
9	Check Digit:	Numeric or "X" (calculated)
10	VIN Serial No.: Model Year:	X = 1999
11	Assembly Line:	2 = Trollhattan, Sweden, Line A (9-3) 3 = Trollhattan, Sweden, Line B (9-5) 7 = Nystad, Finland (9-3 Convertible)
12-17	Serial Number:	Begins with 000001 for each assembly line, each product line, and each model year

SERVICE INFORMATION

SI No. 011-9041	Date September 1999	9-3, 9-5
PI No.	Distr. US	

2000 Vehicle Identification Number

NUMBER OF CHARACTERS: 17 Alpha-Numeric, complies with U.S. and European Regulations.

YS3 E F 4 8 Z 6 Y 3 123456

Geographic location, manufacturer:

Car line:

Market, equipment:

Body type:

Gearbox:

Engine:

Check digit:

Model year:

Assembly plant:

Serial number:

Position		
1-3	Mfr. Code:	YS3 = Saab Automobile AB, Sweden
4	Car Line:	D = Saab 9-3 E = Saab 9-5
5	Model Series/ Restraint Type:	D = w/Dual Airbags (9-3, 9-5) F = SE w/Dual Airbags H = Aero (9-5) P = Viggen (9-3)
6	Body Type:	3 = 3-Door Hatchback (9-3) 4 = 4-Door Sedan (9-5) 5 = 5-Door Hatchback (9-3), Wagon (9-5) 7 = Convertible (9-3)
7	Gearbox:	5 = 5-Speed Manual 8 = 4-Speed Automatic
8	Engine:	E = 2.3 L, Turbo (LPT) (9-5) G = 2.3 L, High Output Turbo (9-3 Viggen, 9-5 Aero) H = 2.0 L, Turbo 9-3 (Std. Output) K = 2.0 L, Turbo 9-3 (High Output) Z = 3.0L, Turbo V6, (9-5)
9	Check Digit:	Numeric or "X" (calculated)
	VIN Serial No.:	
10	Model Year:	Y = 2000
11	Assembly Line:	2 = Trollhattan, Sweden, Line A (9-3) 3 = Trollhattan, Sweden, Line B (9-5) 7 = Nystad, Finland (9-3 Convertible, 9-3 Viggen)
12-17	Serial Number:	Begins with 000001 for each assembly line, each product line, and each model year

SERVICE INFORMATION

SI No. **011-9047**

Date **September 2000**

9-3, 9-5

PI No.

Distr. **US**

2001 Vehicle Identification Number

NUMBER OF CHARACTERS: 17 Alpha-Numeric, complies with U.S. and European Regulations.

	Y	S	3	E	F	4	8	Z	6	1	3	12	34	56
Geographical location, manufacturer:														
Car line:														
Market, equipment:														
Body type:														
Gearbox:														
Engine:														
Check digit:														
Model year:														
Assembly plant:														
Serial number:														

Position

1-3	Mfr. Code:	YS3 = Saab Automobile AB, Sweden
4	Car Line:	D = Saab 9-3 E = Saab 9-5
5	Model Series/ Restraint Type:	D = w/Dual Airbags (9-3, 9-5) F = SE w/Dual Airbags H = Aero (9-5) P = Viggen (9-3)
6	Body Type:	3 = 3-Door Hatchback (9-3) 4 = 4-Door Sedan (9-5) 5 = 5-Door Hatchback (9-3), Wagon (9-5) 7 = Convertible (9-3)
7	Gearbox:	5 = 5-Speed Manual 8 = 4-Speed Automatic
8	Engine:	E = 2.3 L, Turbo (LPT) (9-5) G = 2.3 L, High Output Turbo (9-3 Viggen, 9-5 Aero) H = 2.0 L, Turbo 9-3 (Std. Output) K = 2.0 L, Turbo 9-3 (High Output) Z = 3.0L, Turbo V6, (9-5)
9	Check Digit:	Numeric or "X" (calculated)
	VIN Serial No.:	
10	Model Year:	1 = 2001
11	Assembly Line:	2 = Trollhattan, Sweden, Line A (9-3) 3 = Trollhattan, Sweden, Line B (9-5) 7 = Nystad, Finland (9-3 Convertible, 9-3 Viggen)
12-17	Serial Number:	Begins with 000001 for each assembly line, each product line, and each model year

SERVICE INFORMATION

SI No. 012-9047	Date September 2001	9-3, 9-5
PI No.	Distr. US	

2002 Vehicle Identification Number

NUMBER OF CHARACTERS: 17 Alpha-Numeric, complies with U.S. and European Regulations.

	Y	S	3	E	F	4	8	Z	6	2	3	1	2	3	4	5	6
Geographical location, manufacturer:																	
Car line:																	
Market, equipment:																	
Body type:																	
Gearbox:																	
Engine:																	
Check digit:																	
Model year:																	
Assembly plant:																	
Serial number:																	

Position		
1-3	Mfr. Code:	YS3 = Saab Automobile AB, Sweden
4	Car Line:	D = Saab 9-3 E = Saab 9-5
5	Model Series/ Restraint Type:	B = 9-5 Linear w/Dual Airbags D = 9-5 Arc w/Dual Airbags F = 9-3 SE w/Dual Airbags H = 9-5 Aero w/Dual Airbags P = 9-3 Viggen w/Dual Airbags
6	Body Type:	3 = 3-Door Hatchback (Viggen) 4 = 4-Door Sedan (9-5) 5 = 5-Door Hatchback (9-3), Wagon (9-5) 7 = Convertible (9-3)
7	Gearbox:	5 = 5-Speed Manual 8 = 4-Speed Automatic (9-3) 9 = 5-Speed Automatic (9-5)
8	Engine:	E = 2.3 L, 9-5 Turbo (LPT) G = 2.3 L, High Output Turbo (9-3 Viggen, 9-5 Aero) H = 2.0 L, Turbo (9-3 Canadian only) K = 2.0 L, Turbo (9-3 High output) Z = 3.0L, Turbo V6, 9-5
9	Check Digit:	Numeric or "X" (calculated)
	VIN Serial No.:	
10	Model Year:	2 = 2002
11	Assembly Line:	2 = Trollhattan, Sweden, Line B (9-3) 3 = Trollhattan, Sweden, Line A (9-5) 7 = Nystad, Finland (9-3 Convertible, 9-3 Viggen)
12-17	Serial Number:	Begins with 000001 for each assembly line, each product line, and each model year

Saab Automobile AB Bulletins are intended for use by professional Saab technicians only, NOT a "do-it-yourselfer". They are designed to inform these technicians of conditions that may occur on some vehicles, or to provide information that could assist in the proper service of a vehicle. Saab trained technicians have the equipment, tools, safety instructions, and know-how to do a job properly and safely. If a condition is described, DO NOT assume that the bulletin applies to your vehicle, or that your vehicle will have the condition. See your authorized Saab Dealer for information on whether your vehicle may benefit from the information.
© 2001 Saab Automobile AB. All rights reserved.

ENG

SERVICE INFORMATION

SI No. 012-9047 ed. 2	Date September 2002	9-3 CV, 9-5,
PI No.	Distr. All	9-3 SS

2003 Vehicle Identification Number

NUMBER OF CHARACTERS: 17 Alpha-Numeric, complies with U.S. and European Regulations.

YS3 E B 4 9 Z 6 3 3 123456

Geographical location, manufacturer:

Car line:

Market, equipment:

Body type:

Gearbox:

Engine:

Check digit:

Model year:

Assembly plant:

Serial number:

Position		
1-3	Mfr. Code:	YS3 = Saab Automobile AB, Sweden
4	Car Line:	D = Saab 9-3 E = Saab 9-5 F = Saab 9-3 Sport Sedan
5	Model Series/ Restraint Type:	B = 9-5 Linear / 9-3 Linear w/Dual Airbags D = 9-5 Arc / 9-3 Arc w/Dual Airbags F = 9-3 SE / 9-3 Vector w/Dual Airbags H = 9-5 Aero w/Dual Airbags
6	Body Type:	4 = 4-Door Sedan 5 = 5-Door Wagon (9-5) 7 = Convertible (9-3)
7	Gearbox:	5 = 5-Speed Manual 6 = 6-Speed Manual 8 = 4-Speed Automatic (9-3) 9 = 5-Speed Automatic (9-5 / 9-3 Sport Sedan)
8	Engine:	E = 2.3 L, 9-5 turbo (LPT) G = 2.3 L, High Output Turbo (9-5 Aero) K = 2.0 L, High Output Turbo (9-3 SE) S = 2.0 L, turbo (9-3 Sport Sedan LPT) Y = 2.0 L, High Output Turbo (9-3 Sport Sedan) Z = 3.0L, Turbo V6, 9-5
9	Check Digit:	Numeric or "X" (calculated)
	VIN Serial No.:	
10	Model Year:	3 = 2003
11	Assembly Line:	1 = Trollhattan, Sweden, Line B (9-3 Sport Sedan) 3 = Trollhattan, Sweden, Line A (9-5) 7 = Nystad, Finland (9-3 Convertible)
12-17	Serial Number:	Begins with 000001 for each assembly line, each product line, and each model year

Saab Automobile AB Bulletins are intended for use by professional Saab technicians only, NOT a "do-it-yourselfer". They are designed to inform these technicians of conditions that may occur on some vehicles, or to provide information that could assist in the proper service of a vehicle. Saab trained technicians have the equipment, tools, safety instructions, and know-how to do a job properly and safely. If a condition is described, DO NOT assume that the bulletin applies to your vehicle, or that your vehicle will have the condition. See your authorized Saab Dealer for information on whether your vehicle may benefit from the information.
© 2002 Saab Automobile AB. All rights reserved.

ENG

SERVICE INFORMATION

SI No. 012-9047 ed.3	Date September 2003	9-3 CV, 9-5, 9-3 SS
PI No.	Distr. All	

2004 Vehicle Identification Number

NUMBER OF CHARACTERS: 17 Alpha-Numeric, complies with U.S. and European Regulations.

YS3 E B 4 9 Z 6 4 3 123456

Geographical location, manufacturer:

Car line:

Market, equipment:

Body type:

Gearbox:

Engine:

Check digit:

Model year:

Assembly plant:

Serial number:

Position		
1-3	Mfr. Code:	YS3 = Saab Automobile AB, Sweden
4	Car Line:	E = Saab 9-5 F = Saab 9-3
5	Model Series/ Restraint Type:	B = 9-5 Linear / 9-3 Linear w/Dual Airbags D = 9-5 Arc / 9-3 Arc w/Dual Airbags H = 9-5 Aero / 9-3 Aero w/Dual Airbags
6	Body Type:	4 = 4-Door Sedan 5 = 5-Door Wagon (9-5) 7 = Convertible (9-3)
7	Gearbox:	5 = 5-Speed Manual 6 = 6-Speed Manual 9 = 5-Speed Automatic (9-5 / 9-3 Sport Sedan)
8	Engine:	E = 2.3 L, 9-5 turbo (LPT) B235E A = 2.3 L, 9-5 Turbo (Arc) B235L G = 2.3 L, High Output Turbo (9-5 Aero) B235R S = 2.0 L, turbo (9-3 Sport Sedan LPT) B207L Y = 2.0 L, High Output Turbo (9-3 Sport Sedan) B207R
9	Check Digit:	Numeric or "X" (calculated)
	VIN Serial No.:	
10	Model Year:	4 = 2004
11	Assembly Line:	1 = Trollhattan, Sweden (9-3 Sport Sedan) 3 = Trollhattan, Sweden (9-5) 6 = Graz, Austria (9-3 Convertible)
12-17	Serial Number:	Begins with 000001 for each assembly line, each product line, and each model year

Saab Automobile AB Bulletins are intended for use by professional Saab technicians only, NOT a "do-it-yourselfer". They are designed to inform these technicians of conditions that may occur on some vehicles, or to provide information that could assist in the proper service of a vehicle. Saab trained technicians have the equipment, tools, safety instructions, and know-how to do a job properly and safely. If a condition is described, DO NOT assume that the bulletin applies to your vehicle, or that your vehicle will have the condition. See your authorized Saab Dealer for information on whether your vehicle may benefit from the information.
© 2002 Saab Automobile AB. All rights reserved.

ENG

SERVICE INFORMATION

SI No. 012-9047 ed.4	Date August 2004	9-3 CV, 9-5, 9-3 SS
PI No.	Distr. All	

2005 Vehicle Identification Number

NUMBER OF CHARACTERS: 17 Alpha-Numeric, complies with U.S. and European Regulations.

YS3 E B 4 9 Z 6 4 3 123456

Geographical location, manufacturer:

Car line:

Market, equipment:

Body type:

Gearbox:

Engine:

Check digit:

Model year:

Assembly plant:

Serial number:

Position		
1-3	Mfr. Code:	YS3 = Saab Automobile AB, Sweden
4	Car Line:	E = Saab 9-5 F = Saab 9-3
5	Model Series/ Restraint Type:	B = 9-5 Linear / 9-3 Linear w/Dual Airbags D = 9-5 Arc / 9-3 Arc w/Dual Airbags H = 9-5 Aero / 9-3 Aero w/Dual Airbags
6	Body Type:	4 = 4-Door Sedan 5 = 5-Door Wagon (9-5) 7 = Convertible (9-3)
7	Gearbox:	5 = 5-Speed Manual 6 = 6-Speed Manual 9 = 5-Speed Automatic
8	Engine:	E = 2.3 L, 9-5 Linear (Light Pressure Turbo) B235E A = 2.3 L, 9-5 Arc (Turbo) B235L G = 2.3 L, 9-5 Aero (High Output Turbo) B235R S = 2.0 L, 9-3 Linear (Light Pressure Turbo) B207L Y = 2.0 L, 9-3 Arc/Aero (High Output Turbo) B207R
9	Check Digit:	Numeric or "X" (calculated)
	VIN Serial No.:	
10	Model Year:	5 = 2005
11	Assembly Line:	1 = Trollhattan, Sweden (9-3 Sport Sedan) 3 = Trollhattan, Sweden (9-5) 6 = Graz, Austria (9-3 Convertible)
12-17	Serial Number:	Begins with 000001 for each assembly line, each product line, and each model year

Saab Automobile AB Bulletins are intended for use by professional Saab technicians only, NOT a "do-it-yourselfer". They are designed to inform these technicians of conditions that may occur on some vehicles, or to provide information that could assist in the proper service of a vehicle. Saab trained technicians have the equipment, tools, safety instructions, and know-how to do a job properly and safely. If a condition is described, DO NOT assume that the bulletin applies to your vehicle, or that your vehicle will have the condition. See your authorized Saab Dealer for information on whether your vehicle may benefit from the information.
© 2004 Saab Automobile AB. All rights reserved.

ENG

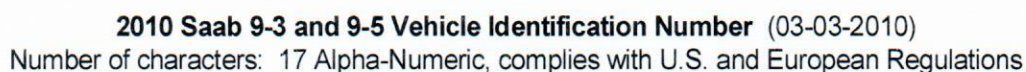
2006 Saab 9-3 and 9-5 Vehicle Identification Number

Number of characters: 17 Alpha-Numeric, complies with U.S. and European Regulations

YS3 E H 4 5 G 9 6 3 123456

- | | |
|------------|---|
| Pos. 1-3 | Geographical location, Manufacturer
YS3 Saab Automobile AB, Sweden |
| Pos. 4 | Car Line
E 9-5
F 9-3 |
| Pos. 5 | Market, Equipment
D 9-3 2.0T/9-5 2.3T w/ driver & passenger airbag
H 9-3/9-5 Aero w/ driver & passenger airbag |
| Pos. 6 | Body type
4 4-door
5 5-door
7 2-door (Convertible) |
| Pos. 7 | Gearbox
1 6-speed automatic
5 5-speed manual
6 6-speed manual
9 5-speed automatic |
| Pos. 8 | Engine
U 2.8L, Turbo (9-3 V6 Turbo) B284L
Y 2.0L, Turbo (9-3 High Output) B207R
G 2.3L, Turbo (9-5 High Output) B235R |
| Pos. 9 | Check digit
0-9 or X |
| Pos. 10 | Model Year
6 2006 |
| Pos. 11 | Assembly Plant
1 Trollhättan, Sweden, 9-3
3 Trollhättan, Sweden, 9-5
6 Graz, Austria, 9-3 Convertible |
| Pos. 12-17 | Serial Number
000001-999999 |

[illegible]



Pos.	1-3	4	5	6	7	8	9	10	11	12-17
Pos. 1-3	Geographical location, Manufacturer YS3 Northern Europe, Sweden, Saab Automobile AB									
Pos. 4	Car Line F 9-3 G 9-5									
Pos. 5	Model Series, Restraint System A 9-3 2.0T sedan & combi; Driver & passenger front & side airbags; Roof side curtain airbags; Active front manual belts; Passive rear belts; Passenger front sensor C 9-3 Aero sedan & combi as "A" above D 9-3X combi as "A" above E 9-3 2.0T convertible; Driver & passenger front & side airbags; Active front & rear manual belts; Passenger front sensor G 9-3 Aero convertible as "E" above R 9-5 Aero sedan; Driver & passenger front & side airbags; Roof side curtain airbags; Outer rear side airbags; Active front & rear manual belts; Passenger front sensor									
Pos. 6	Body type 4 4-door 5 5-door 7 2-door (Convertible)									
Pos. 7	Gearbox A 6-speed automatic/Front wheel drive B 6-speed automatic/All wheel drive C 5-speed automatic/Front wheel drive M 6-speed manual/Front wheel drive N 6-speed manual/All wheel drive									
Pos. 8	Engine J 2.8L, Turbo (9-5 V6 Turbo) A28NER Y 2.0L, Turbo (9-3 4-cyl. Turbo) B207R									
Pos. 9	Check digit 0-9 or X									
Pos. 10	Model Year A 2010									
Pos. 11	Assembly Plant 1 Trollhättan, Sweden, 9-3 4 Trollhättan, Sweden, 9-5 6 Graz, Austria, 9-3 Convertible									
Pos. 12-17	Serial Number 000001-999999									

2011 Saab 9-3 and 9-5 Vehicle Identification Number (09-20-2010)

Number of characters: 17 Alpha-Numeric, complies with U.S. and European Regulations

[illegible]